

The logo features the text "AAAMPO" in a bold, sans-serif font. The first two "A"s are white and positioned on a red background. The "M", "P", and "O" are white and positioned on a dark blue background. A red swoosh underline is positioned below the text.

AAAMPO

**Air Quality &  
Transportation Conformity**

SAMCo Executive Committee | October 15, 2018



# Nonattainment designation on July 17, 2018

Effective date: **September 24, 2018**

- Bexar County was designated nonattainment
- Atascosa, Bandera, Comal, Guadalupe, Kendall, Medina, and Wilson were designated attainment/unclassifiable
- This announcement completed EPA's designation process for the 2015 ozone standards





# Nonattainment Classifications

Bexar County was classified as “**marginal**”

- 2014-2016 = 73 ppb
- 2015-2017 = 74 ppb
- 2016-2018\* = 72 ppb

Nonattainment Classification	8-hour Design Value Range (ppb)
Marginal	71-81
Moderate	81-93
Serious	93-105
Severe	105-163
Extreme	Over 163

\* Through August 9, 2018



# Impact on AAMPO's transportation planning: Transportation Conformity

As the regional, multi-modal transportation planning agency, the Alamo Area MPO is responsible for:

- Guiding the region's transportation planning process
- Allocating federal transportation funding to projects and programs
- **Determining transportation conformity on TIP and MTP (short- and long-range plans)**





# Impact on AAMPO's transportation planning: Transportation Conformity

Transportation conformity is a process to ensure that federally-funded or approved transportation activities in an MPO's long and short-range plans **do not**:

- **Cause new** air quality violations,
- **Worsen existing** violations, or
- **Delay timely attainment** of national air quality standards

Transportation conformity will be conducted on projects within Bexar County that are in the TIP and MTP. It will be conducted as a whole, not on individual projects

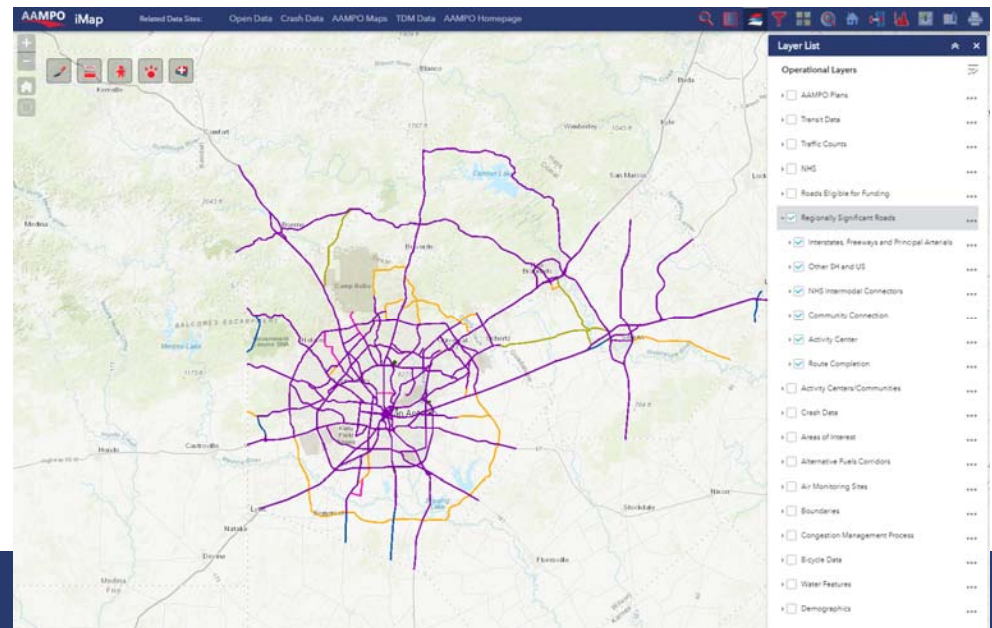


# Impact on AAMPO's transportation planning: Transportation Conformity

Transportation conformity rules apply to transportation projects:

- **approved or funded by FHWA or FTA**
- **non-federal projects on the regionally significant roadway network**

[www.alamoareampo.org/imap](http://www.alamoareampo.org/imap)



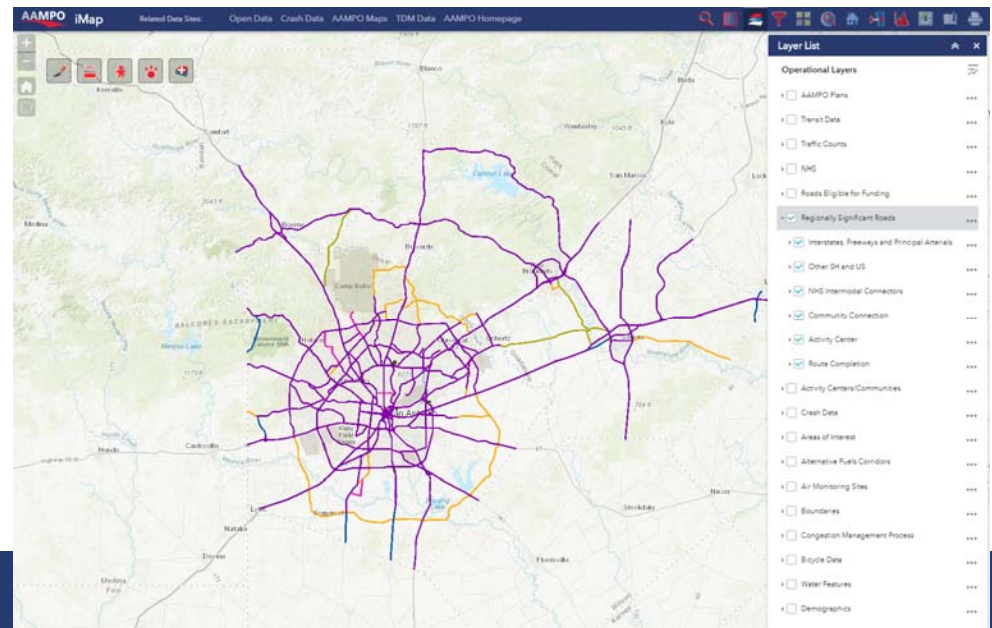


# Impact on AAMPO's transportation planning: Transportation Conformity

## Regionally significant roadways are defined as:

- Interstates, freeways and principal arterials
- Other SH and US routes
- Community connections
- Activity center connections
- Remaining logical connections

[www.alamoareampo.org/imap](http://www.alamoareampo.org/imap)





# Impact on AAMPO's transportation planning: Transportation Conformity

Transportation conformity process requires "interagency consultation"

- Between **federal, state and local partners**
- For **approximately one year before TIP/MTP updates/amendments**

MPOs have primary responsibility for demonstrating transportation conformity



U.S. Department of Transportation

**Federal Highway Administration**



U.S. Department of Transportation

**Federal Transit Administration**



**TEXAS COMMISSION ON ENVIRONMENTAL QUALITY**







# Impact on AAMPO's transportation planning: Transportation Conformity

Now that Bexar County is designated non-attainment, transportation conformity will be required:

- Every time **a new TIP/MTP is adopted**
- When **the TIP/MTP is amended** to add new added- or reduced-capacity projects in Bexar County
- When the **date an added- or reduced-capacity project** in Bexar County **is to be open to the public is revised** to the extent that it **crosses travel demand model network milestone years**
- Currently, the TIP/MTP is amended quarterly. **Major amendments** such as new added- or reduced-capacity projects in Bexar County **will trigger conformity determinations – making it very difficult to continue amending the TIP/MTP quarterly as we have done in the past**



# Impact on AAMPO's transportation planning: Transportation Conformity

If conformity is not demonstrated, the area would enter a “lapse” where federal funds for highway and transit projects are delayed

Only a few projects can move forward in a lapse:

- **Safety** (i.e. guardrails, pavement resurfacing, adding medians, truck climbing lanes)
- **Mass Transit** (i.e. construction of passenger shelters; new bus purchases for replacement or minor fleet expansion)
- **Air Quality** (i.e. bike and pedestrian facilities; continuation of ride-sharing promotion)
- **Other projects** that can be shown to not have a negative impact on the region's air quality (i.e. planning activities, studies not leading directly to construction, landscaping)
- **See full list at [40 CFR 93.126](#)**

Project funding is not “lost” due to a lapse



## Funding Opportunities: Congestion Mitigation & Air Quality Program (CMAQ)

- CMAQ funds transportation projects that **support attainment of NAAQS**
- In Texas, nonattainment areas receive an **annual allocation based on population and severity of pollution**
- Projects are **selected by the MPO** in consultation **with TxDOT**. The federal share is **typically 80%** though some project types are eligible for 100% federal funding

# Upcoming Schedule



## 2018

July 17	August	September	October	November	December
EPA designates Bexar County nonattainment for ozone. All other counties in the San Antonio-New Braunfels MSA designated Attainment / Unclassifiable	Presentations to TAC / TPB on MTP and Air Quality	Effective date of designation – clock starts for AAMPO to prove Transportation Conformity  Presentations to TAC / TPB, as needed	Presentations to TAC / TPB, as needed	All model runs are complete  Hold MTP public meetings in all four counties	Presentations to TAC / TPB on MTP (public meeting outcomes) and Air Quality

## 2019

January	February	March	April	...	September
Presentations to TAC / TPB on MTP and Conformity (“Presentation”)  Begin 60-day public comment period on Conformity document	Hold AQ public meeting (Bexar County only)  Hold or cancel February TAC / TPB?	Presentation to TAC / TPB, as needed	<b>Action</b> by TAC / TPB on MTP and Conformity  AAMPO staff sends Conformity document to Interagency Consultation Partners	Interagency Consultation Partner comment and response period	Transportation Conformity deadline  Interagency Consultation Partners provide concurrence letter (FHWA’s letter is final approval)



## Next Steps

- AAMPO initiated a pre-analysis consensus plan meeting in September with the consultative partners
- Bexar County must attain 70 ppb ozone standard **within three (3) years** of designation (September 2021). **The monitoring data used will be 2018-2020.**
- If Bexar County does not attain the standard, it could be bumped to “moderate” classification, initiating more requirements
- Even if we attain ozone standard in three years, we are not out of nonattainment but become a maintenance area with the same requirements as if we were still nonattainment



AAMPO

**Thank you!**

Sid Martinez  
AAMPO Director

[imartinez@alamoareampo.org](mailto:imartinez@alamoareampo.org)